



EPCOR Drainage 2019 Capital Program

Consulting Engineers of Alberta - 2019 Partnering with Industry Symposium Jan 16, 2019

PROVIDING MORE 

Outline



- Capital Program
- Stormwater Integrated Resource Plan (SIRP)

2019 Capital Program

- Neighbourhood Renewal
- Rehabilitation Projects
- Growth Projects
- Flood Mitigation Projects



2019 Neighbourhood Renewal

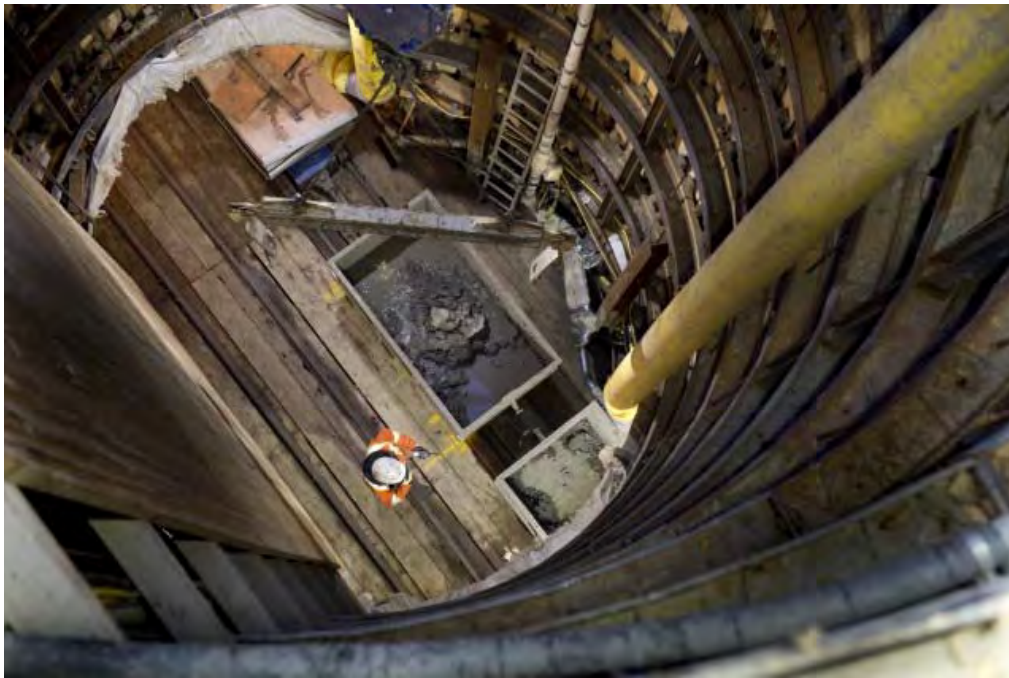
Design	Construction	
Pleasantview	Eastwood	Youngstown
Ottewell	Lynnwood	Baturyn
Meyokumin	Elmwood Park	Coronet Industrial
	Glenwood	Greenfield
	Grandview Heights	La Perle
	Highlands	U of A
	Kensington	

Rehabilitation Projects

- Large Trunk Rehab: Area S1 & S2A
- Clareview Sanitary Trunk Rehabilitation
- Gold Bar Utilidor
- New Buena Vista Pump Station
- SW3 Trunk Sewer Rehabilitation



Growth Projects



- Imagine Jasper Avenue Streetscaping
- W3-4-5
- SW1 PumpStation Upgrades
- SESS SW4
- SESS SA10A
- NEST NC2 & NC3

Flood Mitigation Projects

- Aldergrove
- Hurstwood Estates
- Parkallen Dry Pond
- Greenfield (East) Sanitary Relief
- Ermineskin / Steinhauer
- Tweddle Place
- Malcolm Tweddle & Edith Rogers Dry Ponds
- Westbrooks Estates





SIRP

Stormwater Integrated Resource Plan

Planning for a Flood Resilient Future

- Identify areas of Edmonton that have the highest risk of impact from flooding
- Develop drainage infrastructure and program improvements
- Educate homeowners on the actions they can take to reduce their risk



Potential Flood Impact

- **Public health and safety** - For example: ability to access hospital services, risk of illness or injury and the possibility of loss of life
- **Social issues** - For example: loss of essential utilities and emergency services, displacement of vulnerable populations, mental health and major inconveniences
- **Environmental damage** - Including: damage to natural habitat, loss of wildlife and vegetation and waste management
- **Financial losses** - Including: property damage, costly repairs, loss of business and loss of work

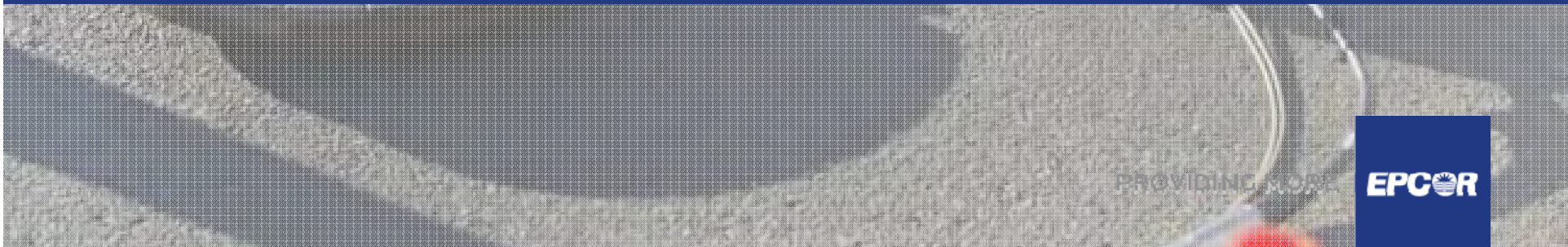
Our Proposed Plan

Based on public input and the risk rankings of Edmonton's 1,300 drainage sub-basins, we are proposing the following plan to:

- Protect hospitals, essential services, and social services by reducing their flood risk exposure.
- Prioritize flood mitigation work at locations where flooding could put human life and social service agencies at risk.



Questions?



PROVIDING MORE

EPCOR