

City of St Albert Capital Projects Program 2019

2019 Consulting Engineers of Alberta
Partnering with Industry Symposium

January 16, 2019

Presented by:

Jay Mason, P.Eng.

Manager, Capital Projects

Engineering Services



2019 Construction Season Overview

- Council priorities are to maintain service levels thus focus was on repair, maintenance and replacement (RMR) during budget process
- Continuation of use of site occupancy days in construction contract documents – predominantly in transportation projects
- Prequalification of contractors or evaluated tenders for majority of projects
- Growth program is \$34 million for 2019
- RMR Municipal program is \$28 million for 2019
- RMR Utility program is \$8.8 million for 2019

2019 RMR Construction Program

- Arterial/Collector/Local Roadway Program

- Thin overlay
- Micro-surfacing
- Crack filling
- Mill and Inlay



- Arterial Roadway Work - \$2.375M
- Collector Roadway Work - \$1.44M
- Local Roadway Work - \$1.44M

2019 RMR Construction Program

- Roadway Rehabilitation \$2M
 - Boudreau Rd. Full Depth Reclamation (\$500,000)
 - McKenney and Ray Gibbon Rail Crossing Approach Repairs (\$300,000)



2019 RMR Construction Program

- Red Willow Trail Overlay (\$385,000)
- Sidewalk Program (\$742,500)
- Barrier Wall Replacement (\$1.6M)
- Parking Lot Restoration (\$1.5M)
- Lane Reconstruction Program (\$1.6M)

2019 RMR Construction Program

- Akinsdale Arena Lifecycle Repairs (\$3M)
- Lacombe Park Plaza and Building (\$1.7M)



2019 RMR Construction Program

- Utilities

- Storm LOS: Forest Lawn, Sturgeon
- Water Infrastructure Rehab: Hebert Rd, RDU 9
- Wastewater CIPP Lining
- Outfall 8 and 10

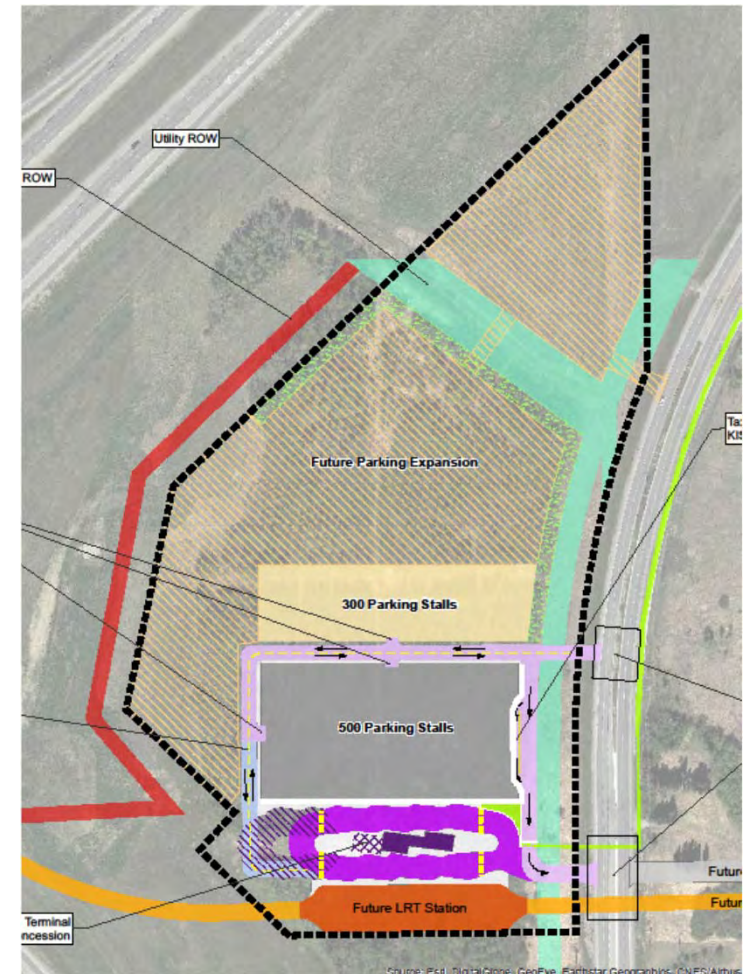


2019 Growth Construction Program

- Safe Journey to Schools (\$600,000)
- Neighborhood Traffic Calming (\$500,000)
- Arterial and Collector Intersection Enhancements (\$2.15M)
- Outdoor Artificial Ice Plant and Dome (\$1.3M)

2019 Growth Construction Program

- Campbell Park and Ride (\$30M)



2019 Design Work

- Fire Hall #1
- Muir Drive Storm Sewer Upgrades
- Neighborhood Traffic Calming
- Outfall 8b and 12
- Ray Gibbon Dr.
- Concept Planning Fowler Way
- North St. Albert Trail Corridor
- Policing Services Building

Any questions?

